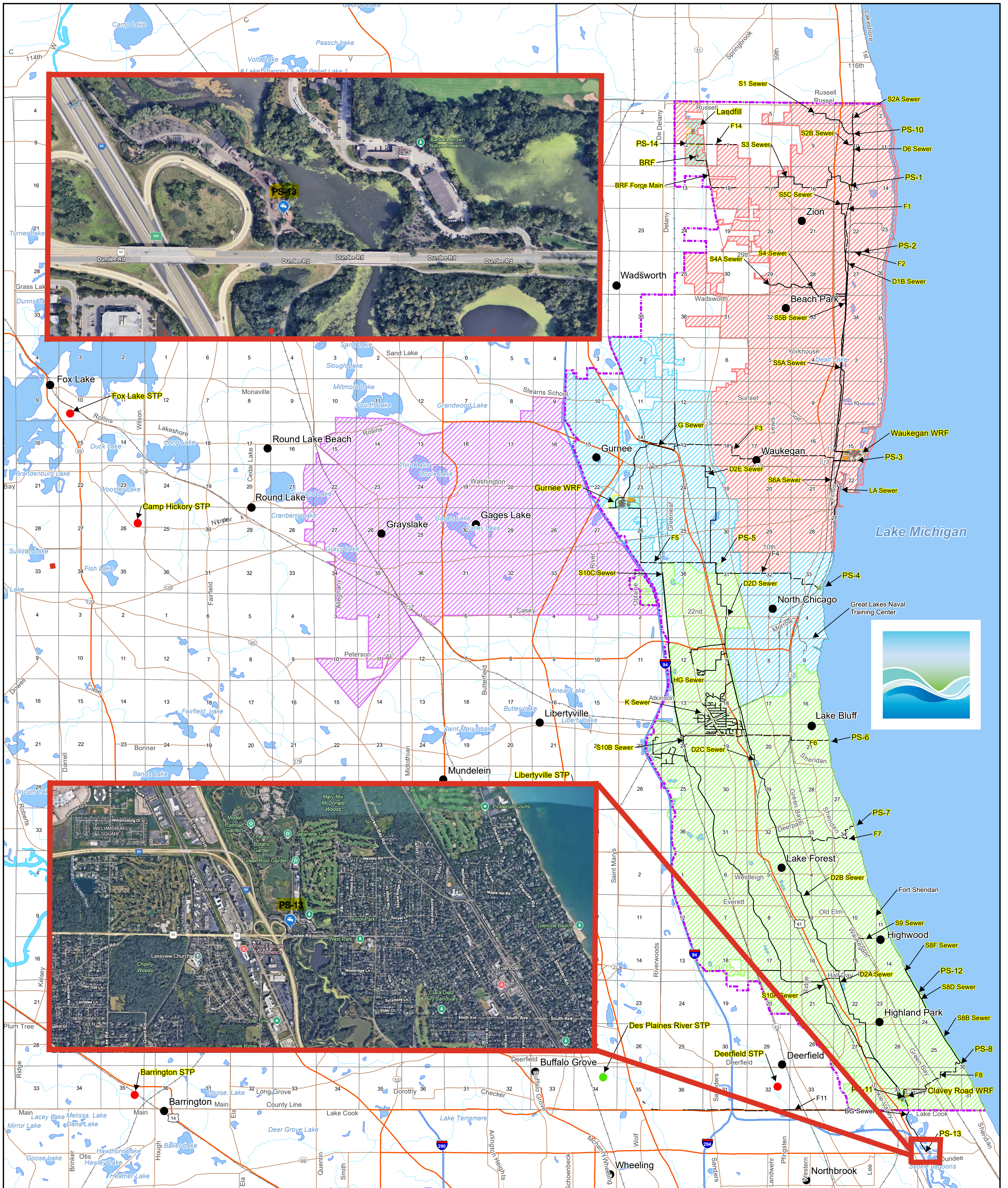


North Shore Water Reclamation District PS-13 and Service Area Map

January 2026



Revised: March 2016

Legend

- Municipal STP
- Lake County STP
- Municipality
- NSWRD FPA Boundary
- NSWRD Sanitary Sewer
- NSWRD Force Main
- ▨ Tributary to Clavey Road WRF
- ▨ Tributary to Gurnee WRF
- ▨ Lake County Tributary to Gurnee WRF
- ▨ Tributary to Waukegan WRF
- Limited Access
- Highway
- Major Road
- Local Road
- Minor Road
- Other Road
- Railroad

